

Paul Mason Associates



Hilton Drive, Hatfield Peverel, Essex, CM3 2GN

Guide Price £375,000 - £400,000

Location...

Priory Grange is a collection of beautifully designed homes built between 2022 and 2025, built by the highly reputable Bellway Homes Limited.

Located in the delightful village of Hatfield Peverel, steeped in history and surrounded by natural beauty, offering a tranquil retreat from the hustle and bustle of modern life.

Hatfield Peverel railway station is ideally positioned approximately half a mile away, offering regular services on the Greater Anglia line, with direct links to London Liverpool Street, making the village a popular choice for commuters to the capital, along with trains to Chelmsford and Colchester. The village is also conveniently located near major road networks, including the A12, a primary route connecting London and East Anglia.

There is a variety of dining and shopping options to satisfy every palate and preference. The village is home to a selection of charming pubs, cafes, and restaurants, including the highly regarded Blue Strawberry Bistro.

St. Andrew's Junior School is centrally positioned within the village. Secondary schooling can be found nearby in the Towns of Witham and Maldon. There is also further secondary and grammar schooling in the cities of Chelmsford and Colchester. Whilst in the private sector there is New Hall and Felsted.

For nature lovers, there are an abundance of scenic walking trails and open spaces to explore. The village is historically significant due to the presence of the 11th century St. Andrew's Church, which stands on the site of a former Benedictine priory.

Whether you're drawn in by the sense of community, the stunning countryside, or the excellent schools, one thing's for sure, the village has got a whole lot to offer.

ACCOMMODATION

GROUND FLOOR

Entrance Hallway

Kitchen

3.60m x 1.80m (11'9" x 5'10")

Lounge/Dining Room

4.90m (max) x 4.00m (16'0" (max) x 13'1")

Cloakroom

FIRST FLOOR

Landing

Bedroom One

4.00m x 3.90m (13'1" x 12'9")

En-Suite Shower Room

Bedroom Two

2.50m x 3.35m (max) (8'2" x 10'11" (max))

Family Bathroom

EXTERIOR

Outbuilding

Rear Garden

Driveway for 2 Vehicles

Property Services

Gas - Mains

Electric - Mains

Water - Mains

Drainage - Mains

Heating - Gas

Local Authority - Braintree

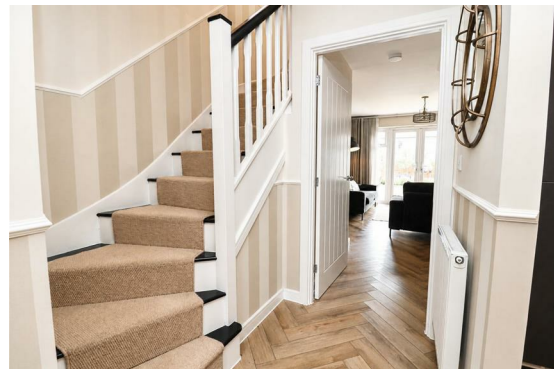
Viewings

Strictly by appointment only through the selling agent Paul Mason Associates 01245 382555.

Important Notices

We wish to inform all prospective purchasers that we have prepared these particulars including text, photographs and measurements as a general guide. Room sizes

should not be relied upon for carpets and furnishings. We have not carried out a survey or tested the services, appliances and specific fittings. These particulars do not form part of a contract and must not be relied upon as statement or representation of fact.



Paul Mason Associates

35 The Street
Latchingdon
Chelmsford
Essex
CM3 6JP
T: 01621 742 310

Bruce House
17 The Street
Hatfield Peverel
Chelmsford
CM3 2DP
T: 01245 382 555

Sales | Lettings | Development | Investment

F: 01245 381257 E: info@paulmasonassociates.co.uk www.paulmasonassociates.co.uk

Paul Mason Associates Limited Registered in England Number - 6767946
Registered Office - Bruce House, The Street, Hatfield Peverel CM3 2DP





Paul Mason Associates

35 The Street
Latchingdon
Chelmsford
Essex
CM3 6JP
T: 01621 742 310

Bruce House
17 The Street
Hatfield Peverel
Chelmsford
CM3 2DP
T: 01245 382 555

Sales | Lettings | Development | Investment

F: 01245 381257 E: info@paulmasonassociates.co.uk www.paulmasonassociates.co.uk

Paul Mason Associates Limited Registered in England Number - 6767946
Registered Office - Bruce House, The Street, Hatfield Peverel CM3 2DP

